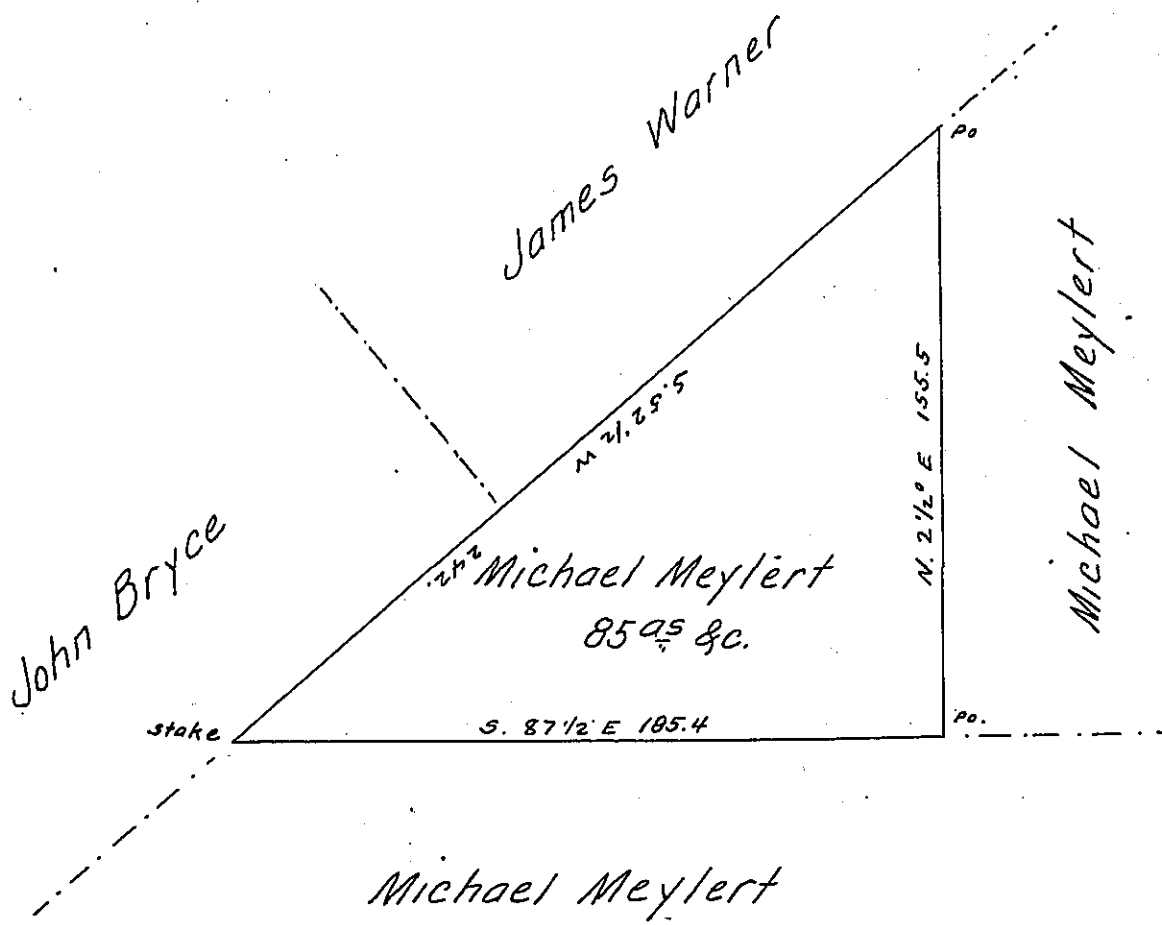


✓



Draft of a tract of land situate in the township of Ross, County of Luzerne, containing Eighty five acres and allowance of six per cent &c.

Surveyed the above described land to Michael Meylert the 3rd day of January A. D. 1868 in pursuance of his warrant dated the 1st day of January A. D. 1868.

Hon. J. M. Campbell }
 Surveyor Gen. } John Sturdevant
 Surveyor for Luzerne Co.

IN TESTIMONY that the above is a copy of the original remaining on file in the Department of Internal Affairs of Pennsylvania, made conformably to an Act of Assembly approved the 16th day of February, 1833, I have hereunto set my Hand and caused the Seal of said Department to be affixed at Harrisburg, this nineteenth day of April 1906,

George B. Brown
 Secretary of Internal Affairs.